



Roxtec ComSeal™ EMC 穿隔系统

防护等级为 IP 54 的 EMC 电缆引入密封系统。

Roxtec ComSeal™ EMC 具有 IP 54 的防护等级旨在确保电磁兼容性。此密封系统配有采用镀镍铸铝的框架。有提供电磁屏蔽的 Roxtec ES 模块与防止传导干扰的 PE 模块可供选择。这些模块适配不同规格的电缆。该穿隔系统拥有 6 种不同规格于可容纳 4 至 32 根电缆。



产品特性



IP/UL NEMA



EMI 保护

安装结构



箱柜和机柜

等级和证书

密封性

- IP 54, UL/NEMA 3,12,12K

支持

- 电磁屏蔽
- 电位均衡

密封组件数据

密封组件



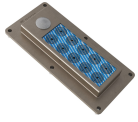
安装凝胶

如需了解详细信息请访问 [roxtec.com](https://www.roxtec.com)。



预装配的穿隔套件

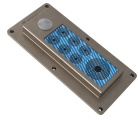
mm/kg



ComSeal 10/10 ES



ComSeal 10/4 ES



ComSeal 10/7 ES



ComSeal 12/12 ES



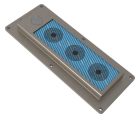
ComSeal 12/3 ES



ComSeal 12/6 ES



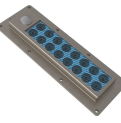
ComSeal 12/9 ES



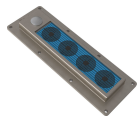
ComSeal 15/3 ES



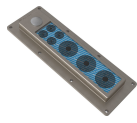
ComSeal 16/10 ES



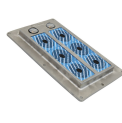
ComSeal 16/16 ES



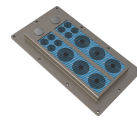
ComSeal 16/4 ES



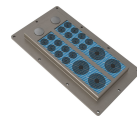
ComSeal 16/7 ES



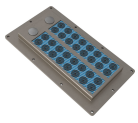
ComSeal 30/6 ES



ComSeal 32/14 ES



ComSeal 32/20 ES



ComSeal 32/32 ES



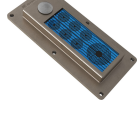
ComSeal 32/8 ES



ComSeal 10/10 PE



ComSeal 10/4 PE



ComSeal 10/7 PE



ComSeal 12/12 PE



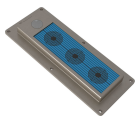
ComSeal 12/3 PE



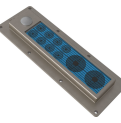
ComSeal 12/6 PE



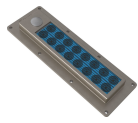
ComSeal 12/9 PE



ComSeal 15/3 PE



ComSeal 16/10 PE



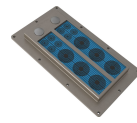
ComSeal 16/16 PE



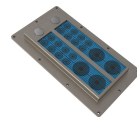
ComSeal 16/4 PE



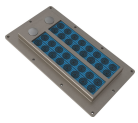
ComSeal 16/7 PE



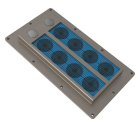
ComSeal 32/14 PE



ComSeal 32/20 PE



ComSeal 32/32 PE



ComSeal 32/8 PE



标题	配置	外部尺寸 WxHxD	开孔尺寸 w x h	重量	产品编号
ComSeal 10/10 ES	10x (3.5-16.5)	81 x 173 x 55	56(+1/-1) x 149(+1/-1)	0.6	CSE0000001010
ComSeal 10/4 ES	2x (3.5-16.5), 2x (9.5-32.5)	81 x 173 x 55	56(+1/-1) x 149(+1/-1)	0.6	CSE0000000104
ComSeal 10/7 ES	6x (3.5-16.5), 1x (9.5-32.5)	81 x 173 x 55	56(+1/-1) x 149(+1/-1)	0.6	CSE0000000107
ComSeal 12/12 ES	12x (3.5-16.5)	88 x 216 x 55	56(+1/-1) x 169(+1/-1)	0.8	CSE0000001212
ComSeal 12/3 ES	3x (9.5-32.5)	88 x 216 x 55	56(+1/-1) x 169(+1/-1)	0.8	CSE0000001203
ComSeal 12/6 ES	4x (3.5-16.5), 2x (9.5-32.5)	88 x 216 x 55	56(+1/-1) x 169(+1/-1)	0.8	CSE0000001206
ComSeal 12/9 ES	8x (3.5-16.5), 1x (9.5-32.5)	88 x 216 x 55	56(+1/-1) x 169(+1/-1)	0.8	CSE0000001209
ComSeal 15/3 ES	3x (28.0-44.0)	91 x 223 x 55	61(+1/-1) x 195(+1/-1)	0.9	CSE0000001503
ComSeal 16/10 ES	8x (3.5-16.5), 2x (9.5-32.5)	81 x 233 x 55	56(+1/-1) x 209(+1/-1)	0.9	CSE0000001610
ComSeal 16/16 ES	16x (3.5-16.5)	81 x 233 x 55	56(+1/-1) x 209(+1/-1)	0.9	CSE0000001616
ComSeal 16/4 ES	4x (9.5-32.5)	81 x 233 x 55	56(+1/-1) x 209(+1/-1)	0.9	CSE0000000164
ComSeal 16/7 ES	4x (3.5-16.5), 3x (9.5-32.5)	81 x 233 x 55	56(+1/-1) x 209(+1/-1)	0.9	CSE0000000167
ComSeal 30/6 ES	6x (28.0-44.0)	155 x 231 x 55	120(+1/-1) x 195(+1/-1)	1.6	CSE0000003006
ComSeal 32/14 ES	8x (3.5-16.5), 6x (9.5-32.5)	135 x 241 x 55	103(+1/-1) x 209(+1/-1)	1.6	CSE0000003214
ComSeal 32/20 ES	16x (3.5-16.5), 4x (9.5-32.5)	135 x 241 x 55	103(+1/-1) x 209(+1/-1)	1.5	CSE0000003220
ComSeal 32/32 ES	32x (3.5-16.5)	135 x 241 x 55	103(+1/-1) x 209(+1/-1)	1.5	CSE0000003232
ComSeal 32/8 ES	8x (9.5-32.5)	135 x 241 x 55	103(+1/-1) x 209(+1/-1)	1.4	CSE0000003208
ComSeal 10/10 PE	10x (3.5-16.5)	81 x 173 x 33	56(+1/-1) x 149(+1/-1)	0.46	CSP0000001010
ComSeal 10/4 PE	2x (3.5-16.5), 2x (9.5-32.5)	81 x 173 x 33	56(+1/-1) x 149(+1/-1)	0.7	CSP0000000104
ComSeal 10/7 PE	6x (3.5-16.5), 1x (9.5-32.5)	81 x 173 x 33	56(+1/-1) x 149(+1/-1)	0.6	CSP0000000107
ComSeal 12/12 PE	12x (3.5-16.5)	88 x 216 x 33	56(+1/-1) x 169(+1/-1)	0.8	CSP0000001212
ComSeal 12/3 PE	3x (9.5-32.5)	88 x 216 x 33	56(+1/-1) x 169(+1/-1)	0.8	CSP0000001203
ComSeal 12/6 PE	4x (3.5-16.5), 2x (9.5-32.5)	88 x 216 x 33	56(+1/-1) x 169(+1/-1)	0.8	CSP0000001206
ComSeal 12/9 PE	8x (3.5-16.5), 1x (9.5-32.5)	88 x 216 x 33	56(+1/-1) x 169(+1/-1)	0.8	CSP0000001209
ComSeal 15/3 PE	3x (28.0-44.0)	81 x 223 x 33	61(+1/-1) x 195(+1/-1)	0.9	CSP0000001503
ComSeal 16/10 PE	8x (3.5-16.5), 2x (9.5-32.5)	81 x 233 x 33	56(+1/-1) x 209(+1/-1)	0.8	CSP0000001610
ComSeal 16/16 PE	16x (3.5-16.5)	81 x 233 x 33	56(+1/-1) x 209(+1/-1)	0.8	CSP0000001616
ComSeal 16/4 PE	4x (9.5-32.5)	81 x 233 x 33	56(+1/-1) x 209(+1/-1)	0.8	CSP0000000164
ComSeal 16/7 PE	4x (3.5-16.5), 3x (9.5-32.5)	81 x 233 x 33	56(+1/-1) x 209(+1/-1)	0.8	CSP0000000167
ComSeal 30/6 PE	6x (28.0-44.0)	155 x 231 x 33	120(+1/-1) x 195(+1/-1)	1.6	CSP0000003006
ComSeal 32/14 PE	8x (3.5-16.5), 6x (9.5-32.5)	135 x 241 x 33	103(+1/-1) x 209(+1/-1)	1.5	CSP0000003214
ComSeal 32/20 PE	16x (3.5-16.5), 4x (9.5-32.5)	135 x 241 x 33	103(+1/-1) x 209(+1/-1)	1.5	CSP0000003220
ComSeal 32/32 PE	32x (3.5-16.5)	135 x 241 x 33	103(+1/-1) x 209(+1/-1)	1.5	CSP0000003232
ComSeal 32/8 PE	8x (9.5-32.5)	135 x 241 x 33	103(+1/-1) x 209(+1/-1)	1.5	CSP0000003208

The product information provided by Roxtec does not release the purchaser of the Roxtec system, or part thereof, from the obligation to independently determine the suitability of the products for the intended process, installation and/or use.

Roxtec gives no guarantee for the Roxtec system or any part thereof and assumes no liability for any loss or damage whatsoever, whether direct, indirect, consequential, loss of profit or otherwise, occurred or caused by the Roxtec systems or installations containing components not manufactured by an authorized manufacturer and/or occurred or caused by the use of the Roxtec system in a manner or for an application other than for which the Roxtec system was designed or intended.

Roxtec expressly excludes any implied warranties of merchantability and fitness for a particular purpose and all other express or implied representations and warranties provided by statute or common law. User determines suitability of the Roxtec system for intended use and assumes all risk and liability in connection therewith. In no event shall Roxtec be liable for indirect, consequential, punitive, special, exemplary or incidental damages or losses.

The Roxtec products are offered and sold in accordance with the conditions of the Roxtec General Terms of Sales. The latest version of the Roxtec General Terms of Sales can be downloaded from <https://www.roxtec.com/en/about-us/about-roxtec/general-terms-of-sales/>

We reserve the right to make changes to the product and technical information without further notice. Any errors in print or entry are no claims for indemnity. The content of this publication is the property of Roxtec International AB and is protected by copyright.

This document was generated on: 2024-04-18